

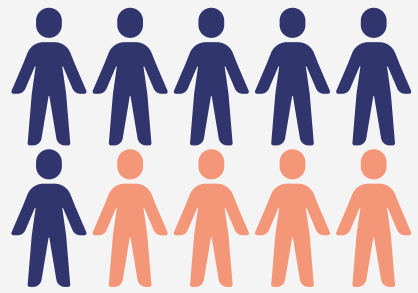
Participatory design of citizen science experiments

Enric Senabre, Dra. Núria Ferran-Ferrer and Dr. Josep Perelló

<https://doi.org/10.3916/C54-2018-03>

CITIZEN SCIENCE

This model of participatory research involves the public in scientific projects for data collection and/or collective interpretation of results.



CO-CREATION

Generic process of collective creativity that includes co-design, understood as the set of specific techniques of participatory design. It contributes to science being carried out collaboratively in society.

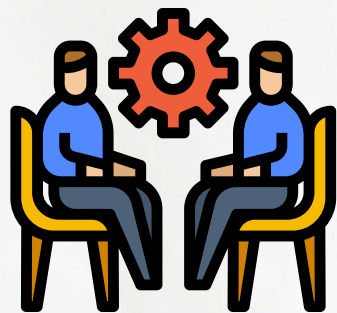
EXPLORATORY STUDY

Students and scientists worked in a participatory way in three experiments on human behavior and social capital in public and urban spaces.



SURVEY

95 students between 13 and 17 years old participated. Their perception of the dynamics and tools used in the co-creation process of each experiment was evaluated.



SEMI-STRUCTURED INTERVIEW

A team of five researchers was interviewed to reinforce the survey data and learn more about the interaction during the co-design process.

CONCLUSIONS

Co-creation is fundamental to motivate and engage participants in citizen science projects. This coordinated interdisciplinary work contributes to the collaborative elaboration of knowledge, as long as the right balance between amateur and expert scientific roles prevails.

Comunicar

www.comunicarjournal.com