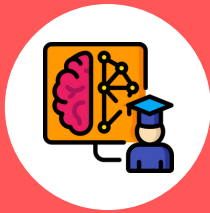


NEW GENIUS-ENTREPRENEURS: ITINERARY AND TRAJECTORIES OF UNIVERSITY EDUCATIONAL EXCELLENCE

Dr. Claudia Möller-Recondo and Dr. Juan-Pablo D´Amato
<https://doi.org/10.3916/C64-2020-07>

INTRODUCTION



Genius

It is interesting to think of the teaching-learning trajectories for genius university students.



Social Entrepreneurship

is crucial to implement an individual treatment by building the adequate contexts for the development their skills.



New capacities

to be adapting, evolving and creating a new ecosystem for the so-called new geniuses to feel valued.

METHODOLOGY AND RESULTS

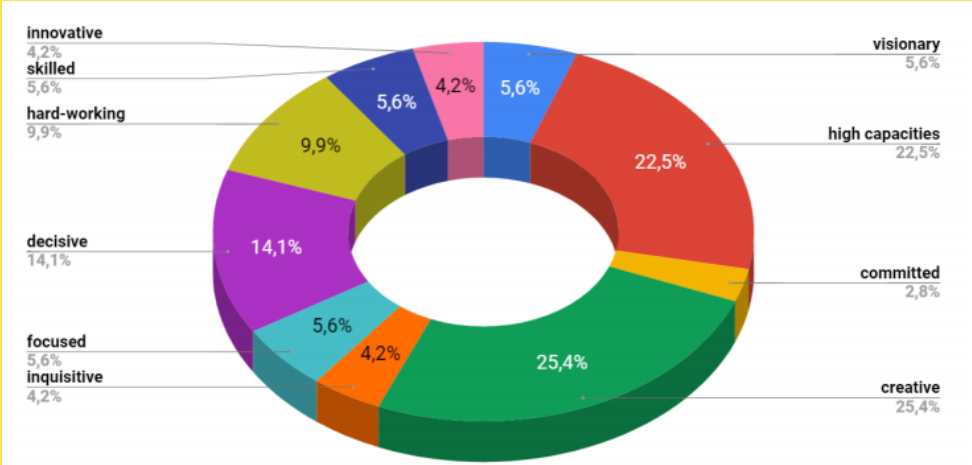


Figure 2. The geniuses puzzle.

- 1) To conceive the genius from a new perspective
- 2) Every student is a potential genius
- 3) To create an educational intervention proposal based on learning and entrepreneurial practices
- 4) To help identify geniuses

Field Work FW 1

200 postgraduate students and professors
Soft or hard sciences
Two broad segments: the first referred to the conceptualization of what a genius is, and the second asked for examples

Field Work FW 2

150 undergraduate students - PIDs (throughout five years and in two different universities)
Methodologies: «Design Thinking», Project-based Learning, Challenge-based Learning, Events-based Learning and «Workshop»

CONCLUSIONS



Those students with specific different capacities have been excluded from the educational system - or have been included as different - and at the same time, the university ecosystem has been unable to identify them.



The new genius is that person who can, in the first place, undertake their own teaching-learning journey “by taking several metro lines”, and can create, manage, develop and/or enhance capacities, skills and competences.



The challenge is now for the university community to be able to develop an adaptive method to detect the needs unnoticed by society and to give back to that same society in the form of inclusion and for the common good.

Comunicar

www.comunicarjournal.com